

Small Lots, Smart Design

Architectural Competition, Los Angeles, CA, USA: February 2006

Project scope: competition design

Project size: 5 units , 480 sq. ft. to 1,500 sq. ft.

Type: Residential

Christoph Kapeller: design architect

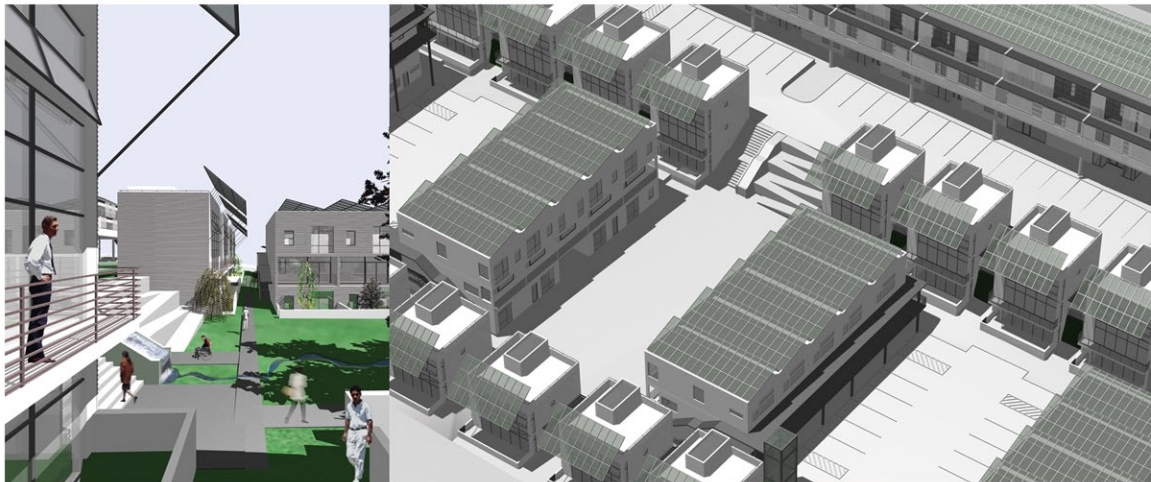
Team: Efen Soriano, Jayna Cooper

The brief asked to develop design templates that could be used on typical small lot subdivisions throughout the city. It specifically called for affordable housing solutions using a new city ordinance concerning lot subdivision. The design creates an easily replicable, modular system for subdivision and densification. Rooftop living and open decks combined with natural daylight and cross ventilation for all rooms provide an ideal concept for the mild Southern California climate.

www.smallbutsmart.org/competitionbrief.htm

RESIDENTIAL





Urban Habitats, Charlottesville, Virginia, USA

Honorable Mention International Design Competition: 2005

Project scope: competition design

Type: Residential

Size: 70 units

Team: Jana Cooper

Habitat for Humanity of Greater Charlottesville, in partnership with the Charlottesville Community Design Center (CCDC) organized an open ideas competition for the transformation of Sunrise Trailer Court into a vibrant, attractive urban community called Sunrise Park. In communities where Habitat is accustomed to building single-family homes, the shortage of affordable land requires Habitat affiliates to build at a higher density. The Urban Habitats Competition was searching innovative models that provide sustainable, affordable multifamily housing.

<http://www.urban-habitats.org/>

RESIDENTIAL

CK
ARCHITECTURE

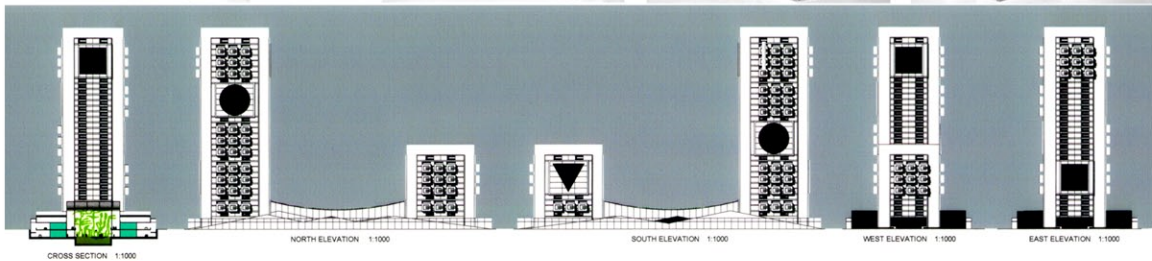
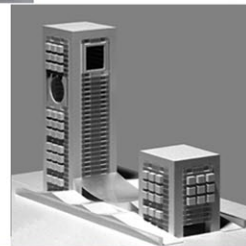
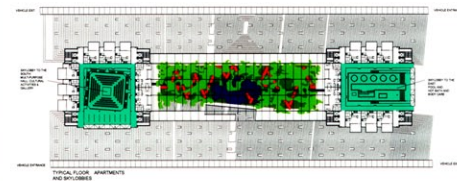
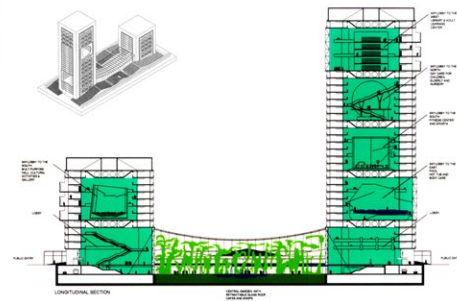
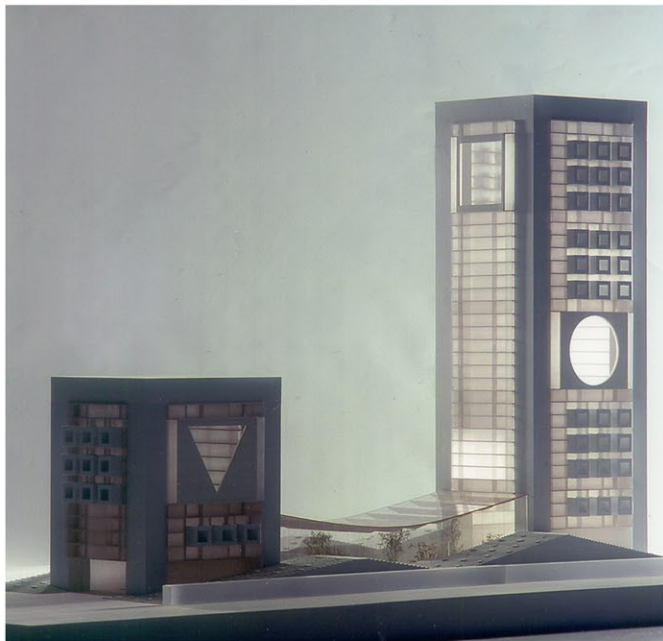
christoph kapeller, aia

639 s.spring st. suite 4a, los angeles, ca 90014,

www.ck-architecture.com

t.: (213) 488-3360

f.: (213) 488-4988



Aomori Northern Housing Complex, Aomori Japan

One of seven finalists among 859 entries at the International Competition: 2002

Judges: Tadao Ando, Jean Nouvel

Project scope: competition design

Type: Residential

Size: 250 units

Christoph Kapeller in collaboration with Matthias Koensgen and Adriana Kapeller.

The project responds to the client's need to create a snow-free, livable environment in the middle of Aomori. In order to take advantage of the beautiful views of ocean and nearby mountains, we proposed two condominium towers. At ground level a glazed, indoor concourse level, that contains lush gardens, shopping and places to sit and relax, connects two towers. At the center of each of the towers, a series of six-story atrium spaces provides additional community activities such as library, workout space, pool and performance space.

RESIDENTIAL

CK
ARCHITECTURE

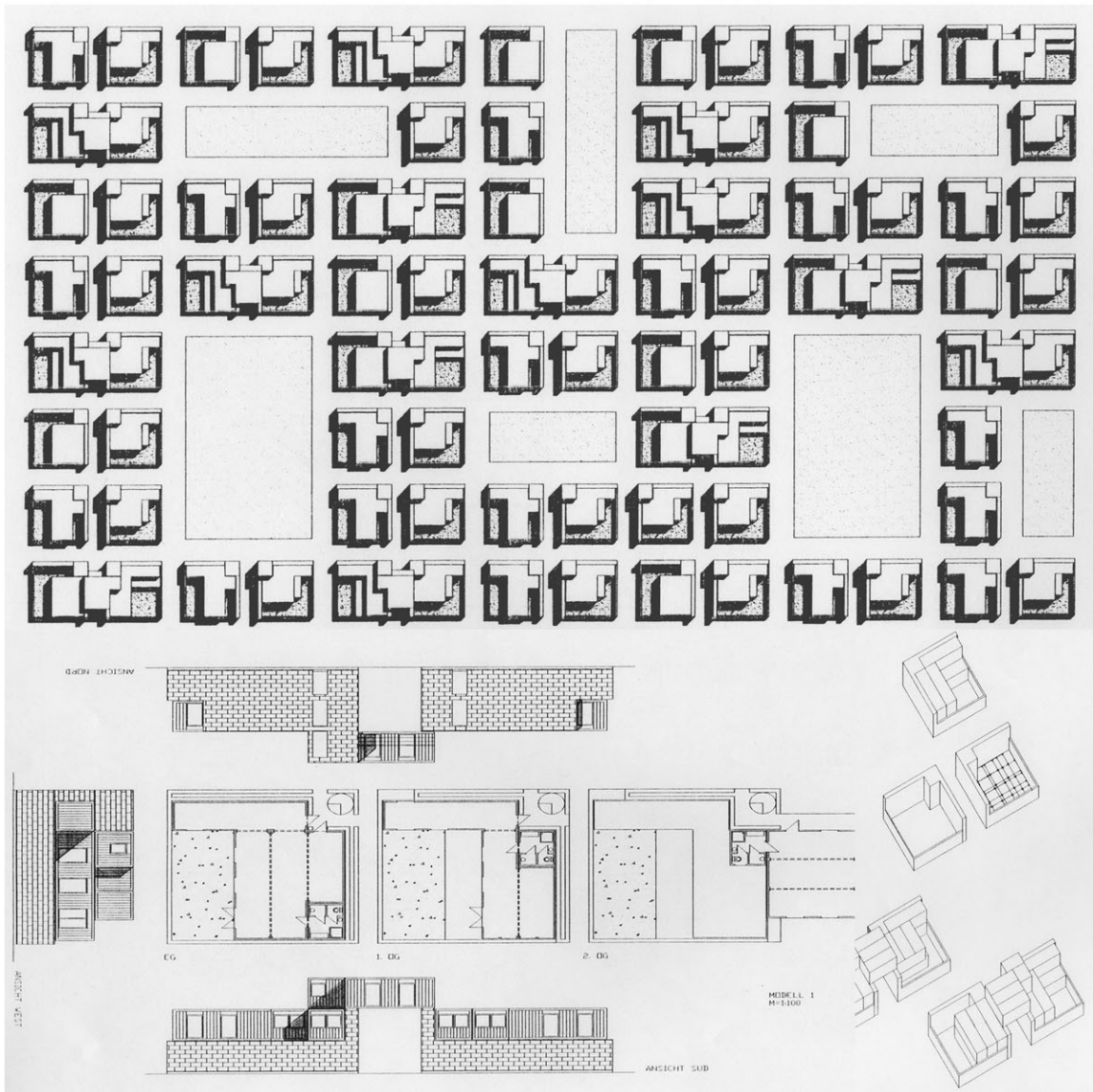
christoph kapeller, aia

639 s.spring st. suite 4a, los angeles, ca 90014,

www.ck-architecture.com

t.: (213) 488-3360

f.: (213) 488-4988



FLEXCON: shipping container based residences for refugees
 SOS Aufbau Wohnen. Ideen für ein neues soziales Bauen, Sezession, Vienna, Austria
 National Competition: 1993
 Project Scope: competition design
 Project Size: 73 units
 Project Type: Residential

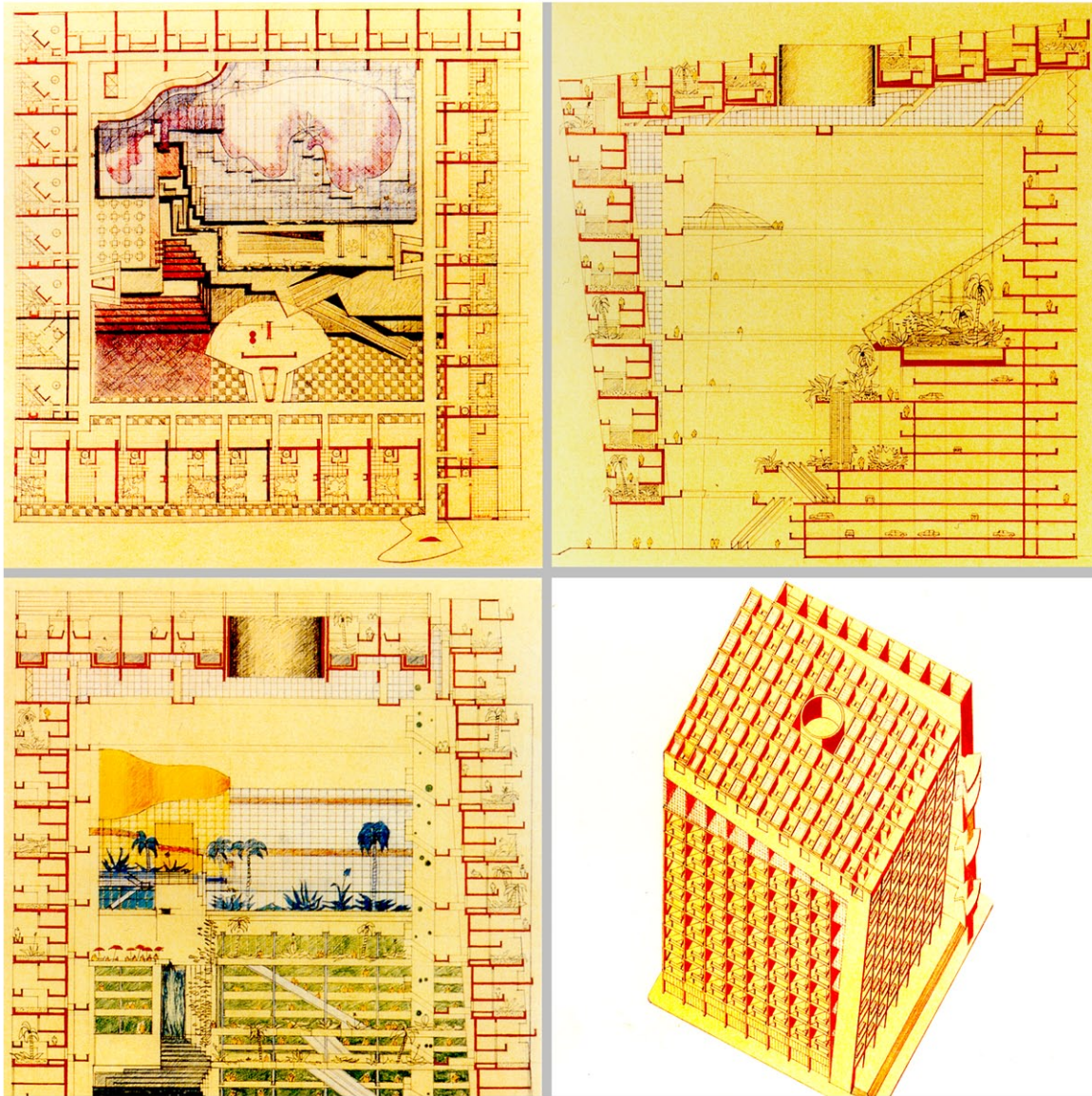
Flexcon uses series of shipping containers in combination with locally built infrastructure to provide liveable private residences for variable size families of war refugees. The courtyard typology provides identification, shelter and private outdoor space, while the use of pre-fabricated container units ensure fast construction, economic viability and reuseability of the family units.

<http://www.iswb.at/forschung/forschung.php?ID=63>

RESIDENTIAL

CK
 ARCHITECTURE

christoph kapeller, aia 639 s.spring st. suite 4a, los angeles, ca 90014, t.: (213) 488-3360 f.: (213) 488-4988
www.ck-architecture.com



Shinkenshiku International Residential Competition, Japan

Honorable mention: 1987

Jury: Helmut Jahn

Project scope: competition design

Type: Residential

Size: 350 units

Christoph Kapeller: design architect

300 by 300 by 300 feet was the topic given by this annual theoretical architectural competition. The design consists of five inhabited planes arranged to allow light to enter the public atrium. In a reversal to traditional urban conventions, the public is taken off the streets and all public functions happen at the center of the city block in order to create density within the city. The habitable walls and roof of the project are designed to form individual units or living cells of 30 x 30 x 30 feet each. Each "cell" features indoor and outdoor and extends over 3 floors with an average floor area of 1,800 sq. ft.

RESIDENTIAL

CK
ARCHITECTURE

christoph kapeller, aia

639 s.spring st. suite 4a, los angeles, ca 90014,

t.: (213) 488-3360

f.: (213) 488-4988

www.ck-architecture.com